

4G LTE Terminals



Multi Band
LTE Cat 1



3G HSPA
2G GSM



Ethernet
Interface
(ELS61T only)



Java embedded



Embedded
TCP/IP Stack



Advanced
Temperature
Management



FOTA
configurable &
royalty-free



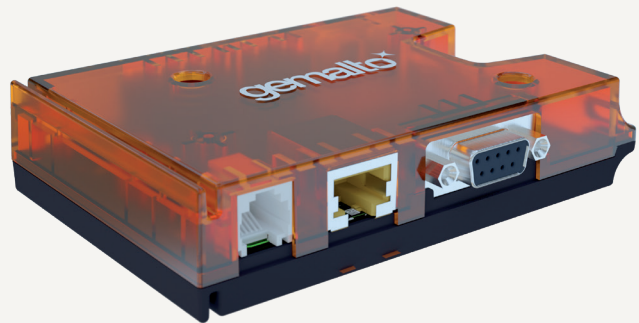
RLS Monitoring
(Jamming
Detection)



USB 2.0
(PLS62T-W only)



Flexible
Mounting



TERMINALS

Cinterion® 4G LTE Terminals

LTE Cat 1 with 2G/3G fallback optimized for M2M IoT Solutions

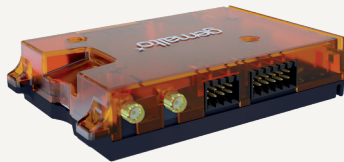
Cinterion® 4G LTE Terminal

LTE Cat 1 IoT Gateway powered by Java

Gemalto's new suite of Cinterion LTE Cat1 Smart Terminals brings new simplicity to M2M. Leveraging Gemalto's next-generation Java embedded technology, the plug-and-play solutions powered by the multi-band LTE Cat-1 basebands with seamless fallback to 3G and/or 2G enable secure wireless TCP/IP connectivity anywhere in the world for a variety of industrial applications such as metering, remote monitoring, transportation, security and many more. The Cinterion ELS61T gateways come in regional versions providing universal industrial interfaces e.g. Ethernet or serial RS232 are encased in a compact, unprecedented mounting options. They provide first-

time IoT developers and small-scale implementers with a flexible, cost effective solution to quickly launch enterprise optimization solutions that expand the Internet of Things. Optional features include embedded component SIM (MIM) and a cloud based SensorLogic application enablement platform that enable out-of-the-box M2M communication reducing integration complexity and Total Cost of Ownership. Like all Cinterion products, the SMART 3G terminals come with full type approval (FTA) and are certified by the largest carriers worldwide.

Plug-and-Play with Most Flexible Mounting



Plug & Play

ELS61 Terminal is a simple and reliable plug-and-play communication device that allows new M2M implementers to quickly connect their industrial applications using wireless technology. With very little integration and approval efforts, it provides a cost effective, swift solution for enterprise optimization technology. Alternative Power over Ethernet (PoE) for the ELS61T offers two additional benefits: further cost savings and flexibility of device placement. Because PoE runs data and power together over the same cable to each device attached to the local area network (LAN), devices can be installed without additional power supply and without concern for the proximity to individual AC outlets.

Embedded Java™

Java offers easy and fast application development, a broad choice of tools, high code reusability, easy maintenance, a proven security concept, on-device debugging as well as multi-threading programming and program execution.

Highly Flexible Mounting Concept

Encased in robust plastic housing, the miniaturized terminal works in virtually any application providing secure 24-7 connectivity. For quick and easy implementation, the terminal is compatible with a variety of mounting schemes including: IN rail mounting, C-rail mounting, Screw fixing or use of cable ties.

Terminal Variants

Productname	Region	Ethernet	USB	Java™	Frequency Bands
ELS61T-E LAN	EMEA	•		•	LTE (1,3,8,20,28), 2G Dual Band
ELS61T-US LAN	USA (AT&T)	•		•	LTE (2,4,5,12), 3G (2,4,5)
ELS31T-V LAN	USA (Verizon)	•			LT E (4 ,13)
ELS61T-AUS LAN	Australia	•		•	LTE (3,5,8,28), 3G (1,5,8)
ELS31T- J LAN	Japan	•			LTE (1,18 ,19)
PLS62T-W USB	Global		•	•	LTE (1,2,3,4,5,7,8,12(17),18,19,20,28), 3G (1, 2, 4, 5, 8, 9, 19), 2G Quad Band

Cinterion® 4G LTE Terminals Features

GENERAL FEATURES

- > 3GPP Rel.7 Compliant Protocol Stack
- > Multiband LTE Cat1 3G, 2G depending on variant
- > SIM Application Toolkit, letter class "b", "c", "e"
- > Control via standardized and extended
- > AT commands (Hayes, TS 27.007 and 27.005)
- > TCP/IP stack access via AT command and transparent TCP services
- > Secure Connection for client IP services
- > Internet Services TCP/UDP server/client, DNS, Ping, FTP client, HTTP client
- > PoE - Power over Ethernet, optional
- > Supply voltage range 8 – 30 V
- > Dimension: 115 x 86 x 26 mm (incl. connectors)
- > Weight: approx 130g
- > Operating Temperature: -30 °C to +65 °C

SPECIFICATIONS

- > LTE Cat.1 data rates
DL: max 10.3Mbps UL: max. 5.2 Mbps
- > HSPA+ Cat.8 (ELS61-US) data rates
DL: max. 7.2 Mbps, UL: max. 5.76 Mbps
- > GPRS Class 12 data rates
DL: max. 85.6 kbps, UL: max. 85.6 kbps
- > SMS text and PDU mode support

SPECIAL FEATURES

- > Ethernet interface (NAPT) with optional Power over Ethernet (PoE)
- > Real time clock with alarm functionality
- > Multiplexer according 3GPP TS 27.010
- > RLS Monitoring (Jamming detection)
- > Informal Network Scan
- > Programmable hardware watchdog
- > Flexible mounting concept
- > Integrated FOTA, configurable and royalty free
- > Embedded SIM as an option (MIM)

JAVA OPEN PLATFORM (ELS61T / PLS62T)

- > Java™ ME
- > Secure data transmission with HTTPS/SSL
- > Multi-Threading programming and
- > Multi-Application execution
- > 18 MB RAM and 31 MB Flash File System

INTERFACES

- > Antenna Connector SMA (female) for GSM/WCDMA
- > Diversity antenna (LTE) SMA connector
- > 20 pin header (Weidmüller) with GPIO's, power, SPI, I²C
- > Mini SIM card reader, 1,8V and 3,0V
- > Embedded SIM as an option (MIM)
- > 2 operating status LED's
- > High speed serial modem interface ASCO
- > Plug-in power supply connector (6-pole Western jack)
- > V.24/ V.28 RS-232 interface, up to 920kbps, auto-bauding (D-sub 9-pole female socket)
- > Ethernet interface (NAPT)

DRIVERS

- > USB, MUX driver for Microsoft® Windows 7 and 10
- > RIL, USB driver for Microsoft® Windows Embedded Handheld™ >= 6.x

APPROVALS

- > CE, RED, GCF, PTCRB, IC, UL
- > AT&T and other local approvals and provider Certifications
- > WEEE, EuP, RoHS and REACH compliant

For more information, please visit

gemalto.com/m2m, developer.gemalto.com, www.facebook.com/gemalto
or follow @gemaltoIoT on twitter.

The information provided in this brochure contains merely general descriptions or characteristics of performance, which in case of actual use do not always apply as described or which may change as a result of further development of the products. An obligation to provide the respective characteristics shall only exist if expressly agreed in the terms of contract. All product designations may be trademarks or product names of Gemalto M2M GmbH or supplier companies whose use by third parties for their own purposes could violate the rights of the owners. Oracle and Java are registered trademarks of Oracle and/or its affiliates. Other names may be trademarks of their respective owners. ARM9 is a registered trademark of ARM Limited.

